

**FORMAX**®

HERE BEGINS YOUR ULTIMATE VALUE

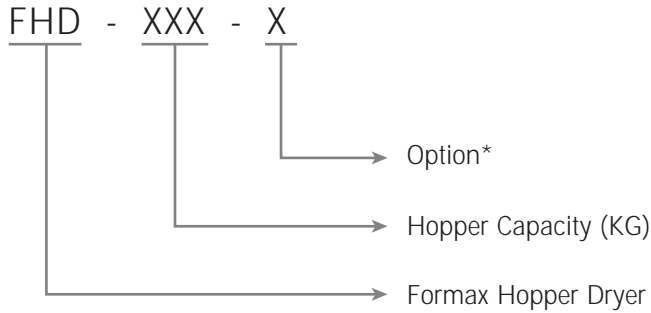
**FHD** Series  
Hopper Dryer

FHD-50



Please read the brochure carefully before operation.

## ■ Coding Principle



Note : \*  
HT=180°C High Temperature P=Polish Internal Hopper

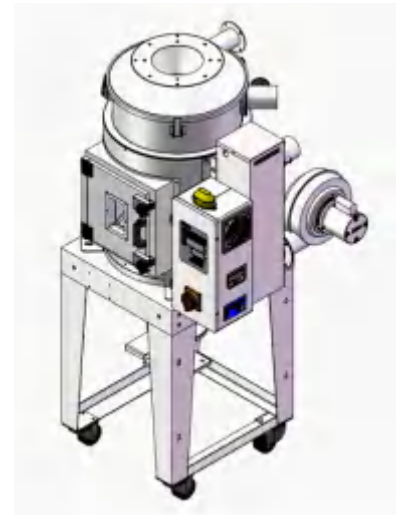
## ■ Features

### Standard Configuration

- Adopt microprocessor controller to control the temperature exactly and use LED monitor and digital PID control.
- Overheat protection can reduce the loss of human or mechanical failure.
- It's better to adopt hot air blowing and cyclone exhaust principle.
- 7-day timers are standard for auto switch on/off to save energy.
- FHD-30 and models above are equipped with the active cleaning door.
- FHD-600 and models below have the aluminum base ;
- FHD-800 and models above include floor stand and slide gate valve.

### Options

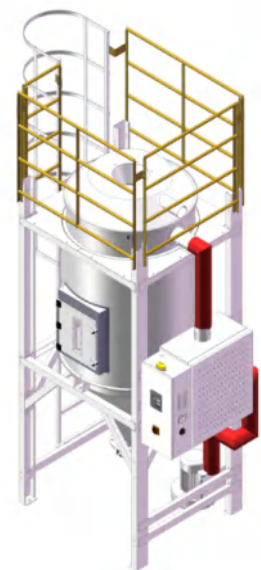
- Hot air recyclers, blower inlet filters, suction box, shut-off suction box, and material storage tank.
- FHD-15 to FHD-600 models above, platform stand as optional, Add PFS after model number
- FHD-800 and models above, platform stand and safety ladder and guardrail as optional



FHD-50 with floor stand (optional)

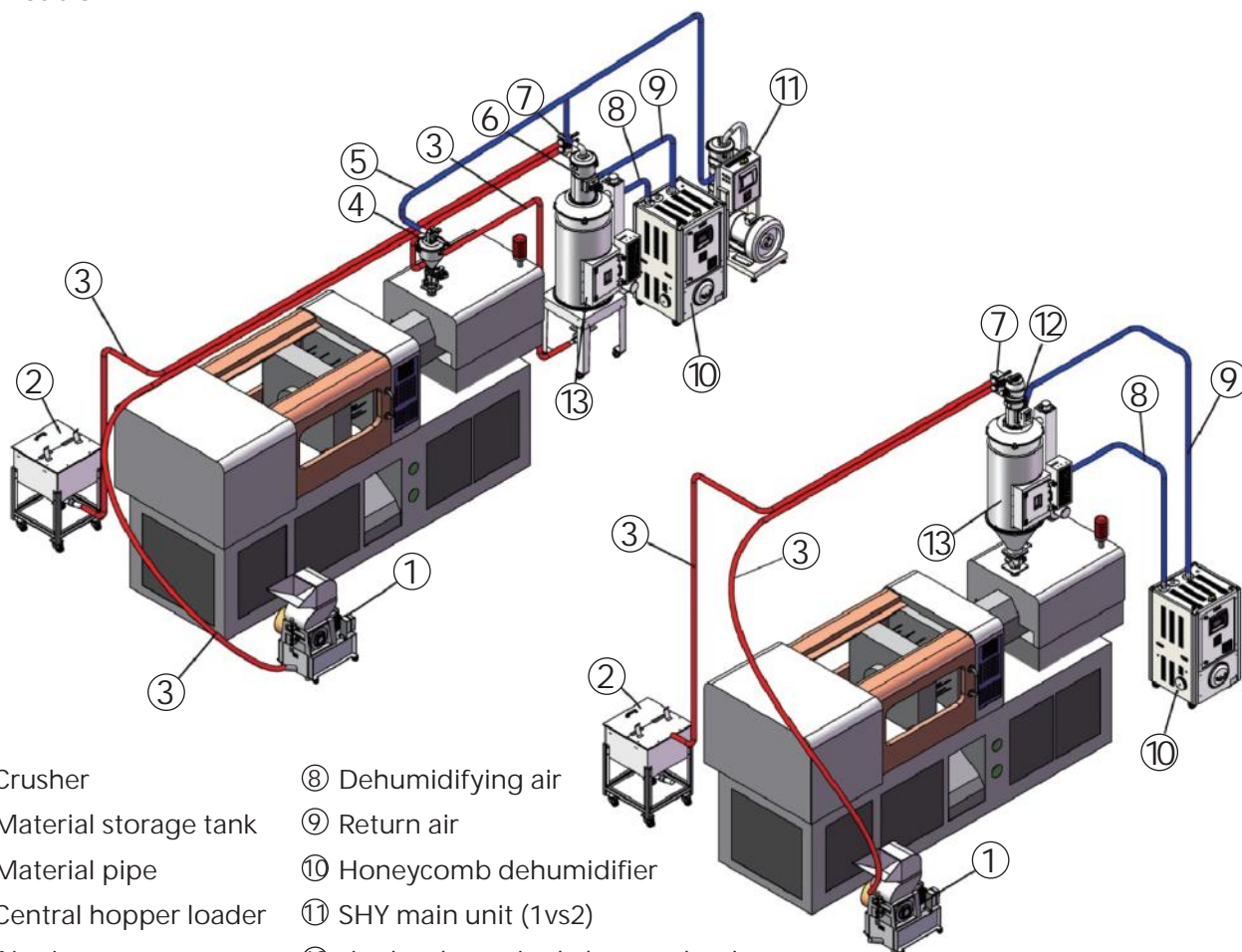


Shut-off Suction Box



FHD-800 and models above with safety ladder and guardrail (optional)

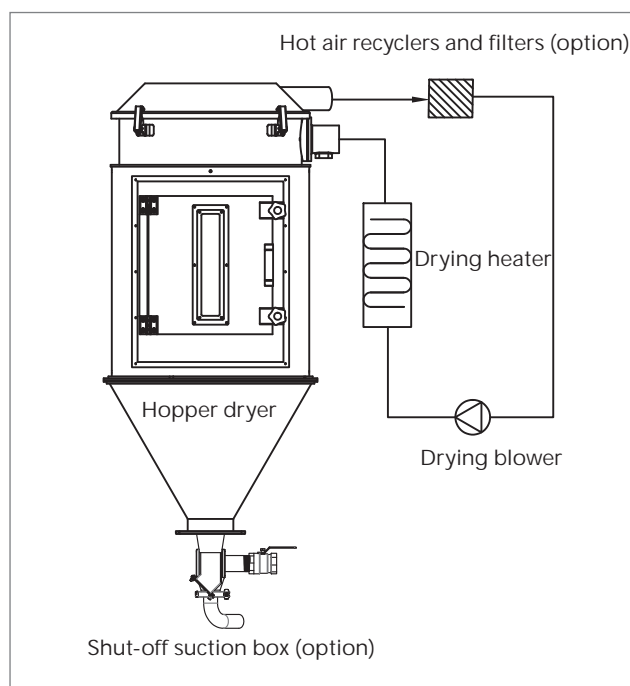
■ Application



- ① Crusher
- ② Material storage tank
- ③ Material pipe
- ④ Central hopper loader
- ⑤ Air pipe
- ⑥ Central hopper loader
- ⑦ Proportional valve
- ⑧ Dehumidifying air
- ⑨ Return air
- ⑩ Honeycomb dehumidifier
- ⑪ SHY main unit (1vs2)
- ⑫ single-phase single hopper loader
- ⑬ Hopper dryer

■ Working Principle

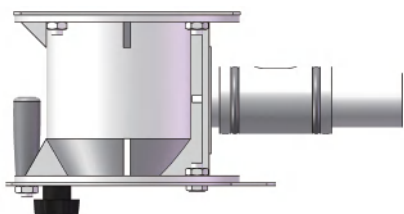
Air blown out of blower became high temperature drying air after through drying heater. Through the special air blowing design, hot air can be equably dispersed in the material storage tank. Hot air recycler is optional so the air enters drying blower after being filtered to form a closed loop circle and save electricity.



## Options

### Suction Box

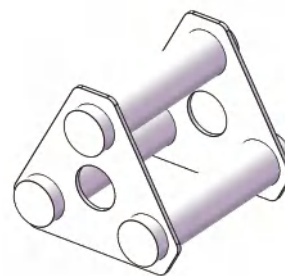
Used with hopper dryer incl. floor stand and hopper loader. It's easier to convey and discharge material from the dryer.



Model	Available Type
SB-1P-40	FHD-15 ~ 75
SB-1P-50	FHD-100 ~ 300

### Magnets

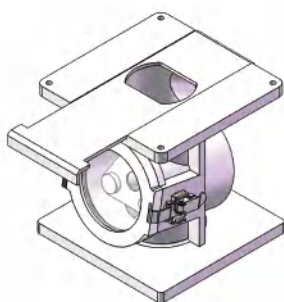
Absorb metallic particles in materials to avoid of entering any other machines.



Model	Available	Aluminum Holder
MR-3	FHD-15 ~ 150	(88.5X78X2.3)X2
MR-5	FHD-200 ~ 300	(148X80X2.3)X2

### Magnetic Base

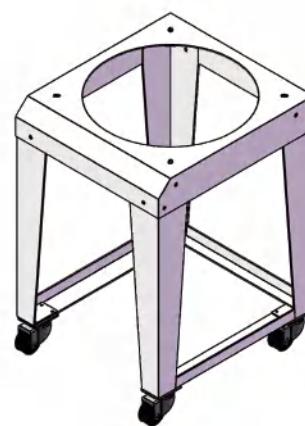
It's suitable for installing on the bottom of hopper dryer and can absorb the metallic particles.



Model	Available Type
MB-25	FHD-15
MB-50	FHD-15 ~ 75
MB-100	FHD-100 ~ 150
MB-200	FHD-200 ~ 300
MB-400	FHD-400 ~ 600

### Platform Stands

It can hold the hopper dryer and is easier to install, move and remove.



Model	Available Type
PFS-15	FHD-15
PFS-30	FHD-30
PFS-50	FHD-50 ~ 75
PFS-100	FHD-100 ~ 150
PFS-200	FHD-200 ~ 300
PFS-400	FHD-400 ~ 600

### Hot Air Recyclers and Filters

It can create the half-closed loop as with hopper dryers and avoid of the temperature increased. In addition, the hot air circle heating is pretty fast and then saving 40% energy.



Model	A	B	Available Type
HAR-1	Ø95	Ø7.5	FHD-15~150
HAR-2	Ø125	Ø8	FHD-200~600
HAR-3	Ø161	Ø8.5	FHD-800~1000

### Air discharge Filters

It can effectively filter the dust-containing gas discharged from the dryer to avoid air pollution, and the efficiency can reach 99%.

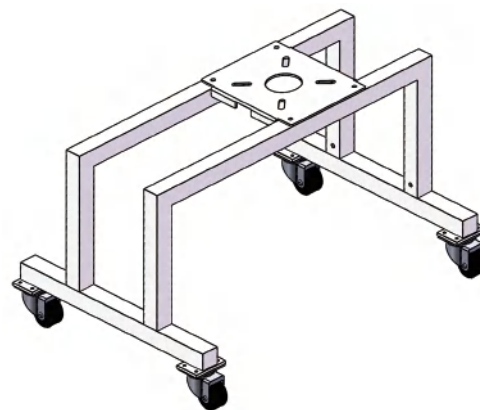


Model	A	B	Available Type
ADC-1	Ø95	Ø7.5	FHD-15~150
ADC-2	Ø125	Ø8	FHD-200~600
ADC3	Ø161	Ø8.5	FHD-800~1000

### N Type Floor Stands

It can hold the hopper dryer and is easier to install, move and remove.

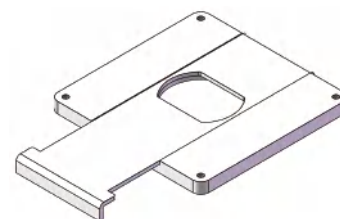
Model	Available Type
NFS-15	FHD-15~75
NFS-100	FHD-100~150
NFS-200	FHD-200~300



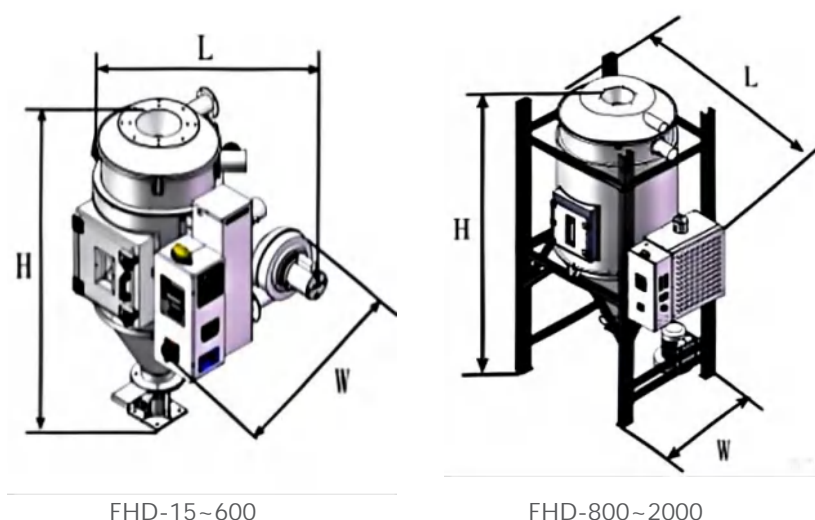
### Slide Gate Valve

In order to close or open the hopper base when the hopper dryer is installed on other machines directly.

Model	Available Type
SGV-140	FHD-15~30
SGV-190	FHD-50~150
SGV-250	FHD-200~300



## ■ Outline Drawings



FHD-15~600

FHD-800~2000

## ■ Specifications

Model	FHD	15	30	50	75	100	150	200	300	400	500	600	800	1000	1300	1600	2000
Hopper Capacity	KG	15	30	50	75	100	150	200	300	400	500	600	800	1000	1300	1600	2000
	Ltr	24	48	80	120	160	240	320	480	640	800	960	1280	1600	2080	2560	3200
Heater	kW	1.6	2.7	4	5	6	8	10	13	20	20	20	30	30	40	60	60
Blower	kW	0.14	0.14	0.2	0.2	0.35	0.35	0.45	0.45	1.03	1.03	1.03	5.5	5.5	5.5	5.5	7.5
Drying Temp.	°C	150 (180°C as optional)															
Air Inlet	inch	2		3				4		5			4	5	8	6	
Air Outlet	inch	1.5	2	2.5				3		4			4	5	6	6.5	
Total Power	kW	1.74	2.84	4.2	5.2	6.4	8.4	10.5	13.5	22.2	22.2	22.2	35.5	35.5	45.5	65.5	67.5
Voltage		3Ø · 220~460VAC · 50/60Hz															
Outline Dimensions																	
L	mm	615	685	780	840	935	945	1030	1030	1395	1415	1415	1690	1805	1805	1475	1650
W		680	690	760	800	865	865	925	925	1175	1200	1200	1210	1320	1320	2000	3155
H		900	1125	1240	1345	1520	1835	1760	2010	2150	2300	2300	3075	3080	3080	3420	3560
Net Weight	kG	30	45	60	80	100	140	165	195	230	265	280	316	390	445	560	618
Standard : 1. FHD-600 and models below with aluminum base ; FHD-800 and models above with floor stand and slide gate valve 2. 7 days 24 hours timers and full insulation.																	

Specifications are subject to change without prior notice.

# FORMAX®

China  
Formax Plastics Automation, Inc.

Dongguan  
No. 9, Taida Road, Chang'an Town, Dongguan City,  
Guangdong Province, China  
Tel. +86-769-3899-9898 Fax. +86-769-8533-3467

Kushan  
No.138-20, Hengshan Road, Kunshan, Jiangsu, China  
Tel. +86-512-5700-8308 Fax. +86-512-5700-8306

Taiwan  
Formax Equipment Inc.

No.12, Ln.12, Anzhong st., Luzhu Dist.,  
Taoyuan City, Taiwan  
Tel. +886-3-2121-725 Fax. +886-3-2127-960

[www.formaxpa.com](http://www.formaxpa.com)  
[www.formax88.com](http://www.formax88.com)



2024.8 All rights reserved.